

n°	Call	Locator	Aslm	Antenna	Power	Qso	Declared	ODX	DX	QRB	Err	ErrQRB	Finale	Err %
1	DG0VOG	JO60QU	530	4x20	0	43	22.023	SA6AIN	812	21.993	1	685	21.308	2.3 %
2	IK2OFO	JN45PB	300	4x25 shark	500	60	16.227	IZ8WGU	901	16.234	1	711	15.523	1.6 %
3	IV3DXW	JN65QQ	2	2x 25jxx70	400	41	12.195	IK7LMX	673	12.163	0	0	12.163	00. %
4	IK3VZO	JN55XA	7	21 el f9ft	500	45	12.103	SP9MM	782	12.087	1	202	11.885	2.2 %
5	IK7LMX	JN80XP	5	16jxx70	70	18	11.771	IQ3VO	783	11.753	0	0	11.753	00. %
6	IU3CQP	JN65DM	0	2 x 23el hm i3dli	200	44	12.375	IZ8WGU	821	12.346	1	654	11.692	2.2 %
7	I4CIV	JN63FX	330	23 elem hm	400	40	11.385	DG0VOG	768	11.383	0	0	11.383	00. %
8	IZ4JMU	JN54WE	350	25 el jxx	500	41	10.939	DG0VOG	751	10.920	0	0	10.920	00. %
9	DL0FTZ	JN49HU	165	3x19 ele.	75	13	7.778	SF6X	866	7.768	1	551	7.217	7.6 %
10	DK1KW	JN58RE	525	2x7 el dk7zb	250	19	7.156	SP1JNY	627	7.145	0	0	7.145	00. %
11	IZ8WGU	JM88AQ	322	19 tonna'	50	10	6.249	F6HTJ	1.195	6.244	0	0	6.244	00. %
12	IV3LNQ	JN65VP	0	19 elementi tonn'	20	22	6.104	IK7LMX	651	6.100	0	0	6.100	00. %
13	IK3XTT	JN55LK	60	33 elementi	70	40	6.034	IK7LMX	780	6.026	0	0	6.026	00. %
14	IQ3VO	JN55LL	0	shark 23 elem.	25	39	5.985	IK7LMX	782	5.985	0	0	5.985	00. %
15	IW1CKM	JN45FD	142	25 elementi	350	35	5.624	IZ0MJE	488	5.616	0	0	5.616	00. %
16	IK3SSG	JN55XH	20	25jxx70	45	29	5.270	IK7LMX	713	5.254	0	0	5.254	00. %
17	IQ1AO	JN45CC	450	19 el.	200	26	3.733	IV3LNQ	440	3.733	2	375	3.358	7.6 %
18	I1LJV	JN44GT	176	11 el. h made	50	20	3.228	IV3LNQ	422	3.225	0	0	3.225	00. %
19	IK2ILG	JN45UP	260	dir 21 el	30	23	3.117	IV3LNQ	318	3.117	0	0	3.117	00. %
20	IU2CAT	JN45UP	260	yagi 21 elementi	30	23	3.117	IV3LNQ	318	3.117	0	0	3.117	00. %
21	IZ0MJE	JN61FU	0	11el lfa yagi	150	7	3.041	IW1CKM	488	3.038	0	0	3.038	00. %
22	IW3FVZ	JN65AM	8	verticale v-2000	100	19	2.949	IK7LMX	725	2.949	0	0	2.949	00. %
23	I2ZSI/6	JN63PL	310	yagi 10 elementi	35	14	3.110	IK2OFO	364	3.112	1	274	2.838	7.1 %
24	IZ3PZI	JN55NN	764	verticale diamond x	20	15	2.565	IK7LMX	779	2.564	0	0	2.564	00. %
25	IZ1GDX	JN45CP	600	28 elementi cushcraf	40	17	2.550	IV3LNQ	434	2.543	0	0	2.543	00. %
26	I1WWE	JN45CP	600	28 elementi cushcraf	40	17	2.550	IV3LNQ	434	2.543	0	0	2.543	00. %
27	IW4CXK	JN64GB	5	gp vertical	50	16	2.380	IK2OFO	281	2.376	0	0	2.376	00. %
28	IZ3XNJ	JN55XL	20	diamond v2000	20	14	2.520	IK7LMX	726	2.514	1	148	2.366	7.1 %
29	IZ6ZER	JN63SO	160	x200 diamond	40	14	2.391	IQ3VO	293	2.387	1	232	2.155	7.1 %
30	IU2CFV	JN45UP	260	dir 21 el	30	16	2.020	I4CIV	285	2.019	0	0	2.019	00. %
31	IZ1LAY	JN45AL	540	21 el. dk7	70	17	1.468	IQ3VO	227	1.467	0	0	1.467	00. %
32	IK2ILJ/4	JN64EE	10	direttiva 5 elementi	30	12	1.354	IV3DXW	184	1.350	0	0	1.350	00. %
33	IQ4AX	JN54KO	40	verticale bibanda	35	9	1.184	IV3DXW	230	1.184	0	0	1.184	00. %
34	IW4APR	JN45SB	65	verticale	20	9	778	IZ1LAY	126	781	0	0	781	00. %
35	IK3XTY	JN55LP	1.118	maspro wh59	25	8	748	I4CIV	220	748	0	0	748	00. %
36	IZ3XBK	JN55PG	20	verticale diamond v	20	9	905	*IV3DXW	225	905	1	225	680	11.1 %
37	IZ2NXF	JN45OM	0	11 elementi	20	12	613	IQ1AO	91	613	0	0	613	00. %
38	IK4XQT	JN54QJ	150	fox maldol balcone	70	5	486	IQ3VO	125	486	0	0	486	00. %
39	IZ3KMY	JN55NI	35	gp collineare	20	8	630	I4CIV	186	630	1	144	486	12.5 %
40	IX1DTY	JN35PS	825	direttiva 21 element	100	4	460	IK2OFO	175	460	0	0	460	00. %
41	IU5BKR	JN53EM	80	16 el. i0jxx	20	2	453	IW1CKM	236	453	0	0	453	00. %
42	IK2YSJ	JN45MM	135	19 f9ft	60	6	407	IQ1AO	80	407	0	0	407	00. %
43	IZ2FMF	JN45KL	0		0	3	174	IQ1AO	67	173	0	0	173	00. %
44	IZ3WUX	JN55NK	50	verticale	20	4	190	IK3VZO	80	130	0	0	130	00. %

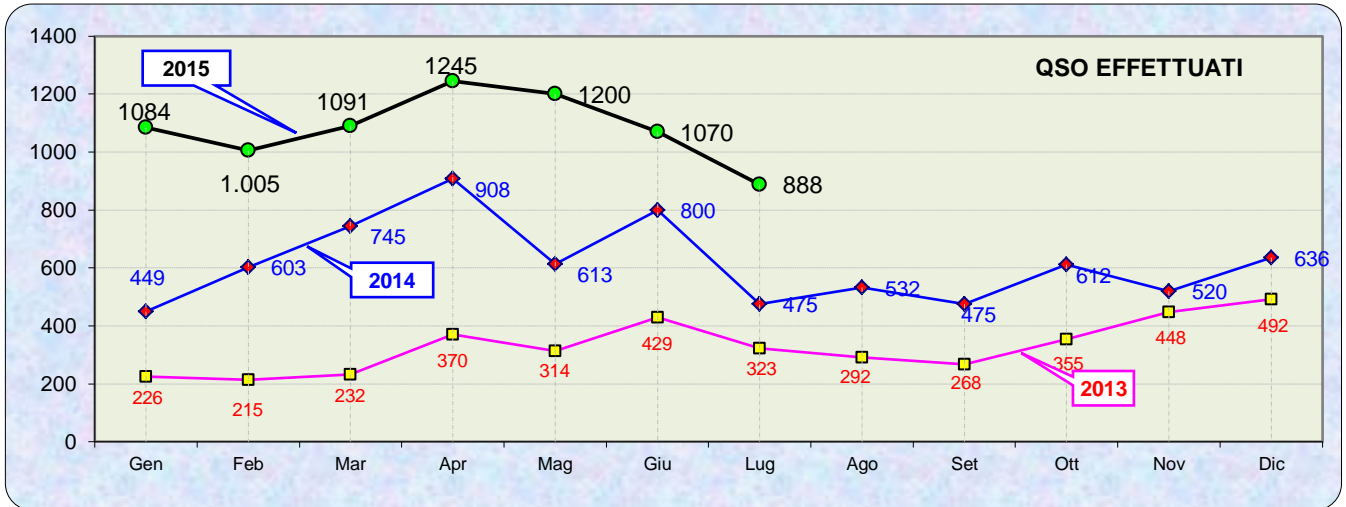
L' asterisco (*) accanto al call ODX significa che il QSO DX è un qso errore



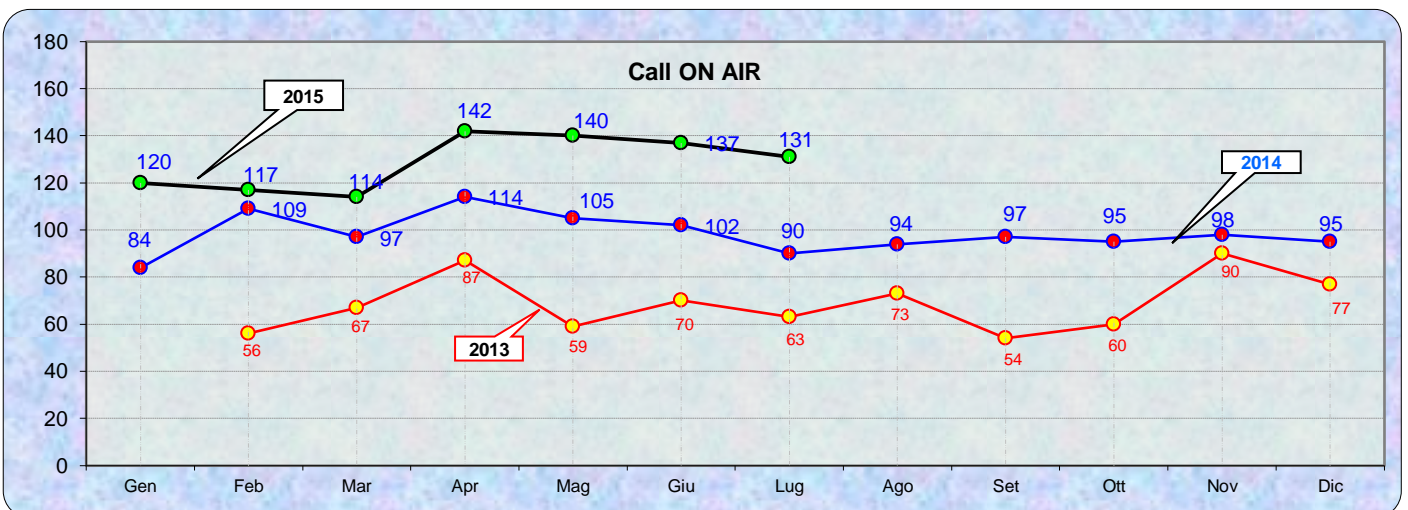
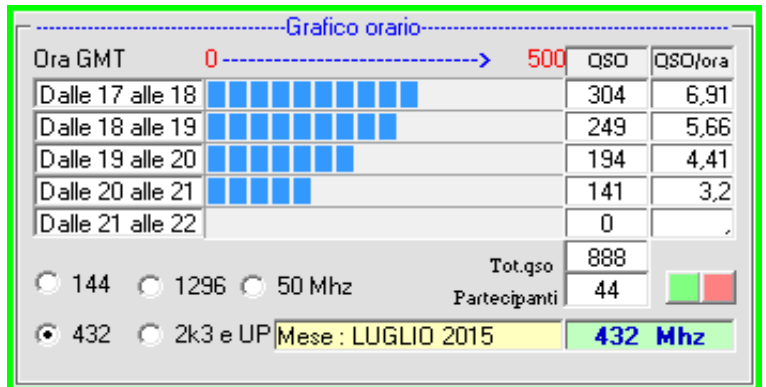
Statistiche mensili (monthly statistics)

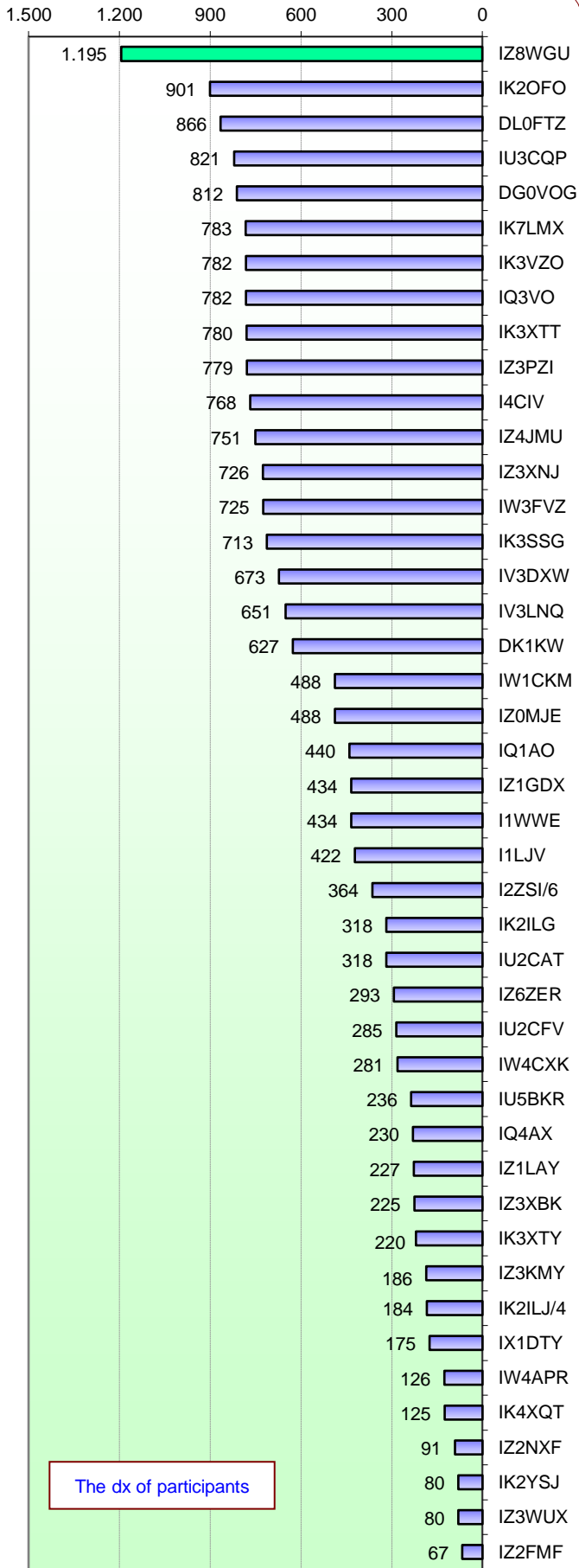
Log	44 -10	Squares	58 +12	
Call in aria	131 -6	Call esteri on air	58 +9	Effective on the air, in the IAC.
Qso totali	888 -182	Country	13 +2	F HB DL SP OK OM S5 PA ON G SM OZ I
Qrb totale	208.279 +8086	Field	3 0	JM JN JO
Locator	124 +5	DX	1195 +321	IZ8WGU <--> F6HTJ - JM88AQ <--> JN12KQ

la colonna in azzurro è la differenza rispetto al mese precedente

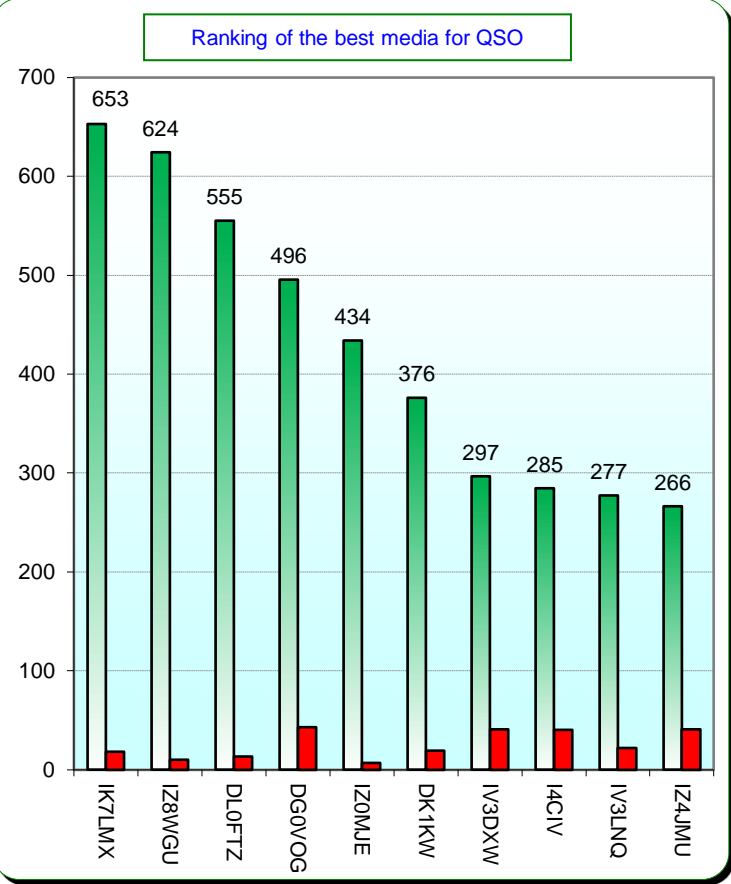


2015				
Mese	qso	log	Call on air	Indice Attività
Gen	1084	53	120	2,5
Feb	1.005	47	117	2,5
Mar	1091	51	114	2,4
Apr	1245	55	142	3,2
Mag	1200	50	140	3,4
Giu	1070	54	137	2,7
Lug	888	44	131	2,6
Ago				
Set				
Ott				
Nov				
Dic				

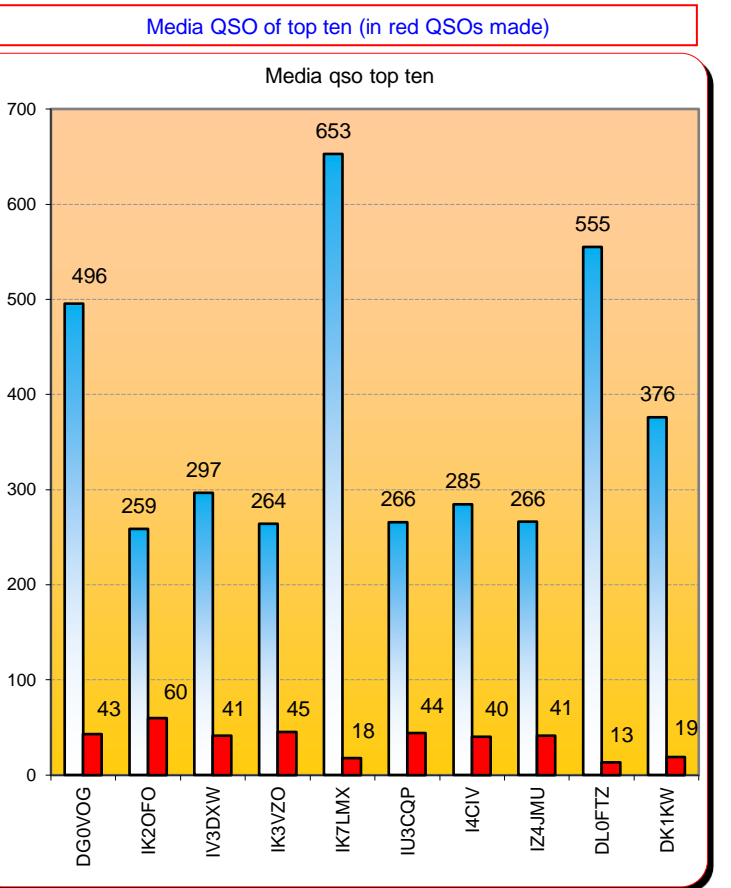




The dx of participants

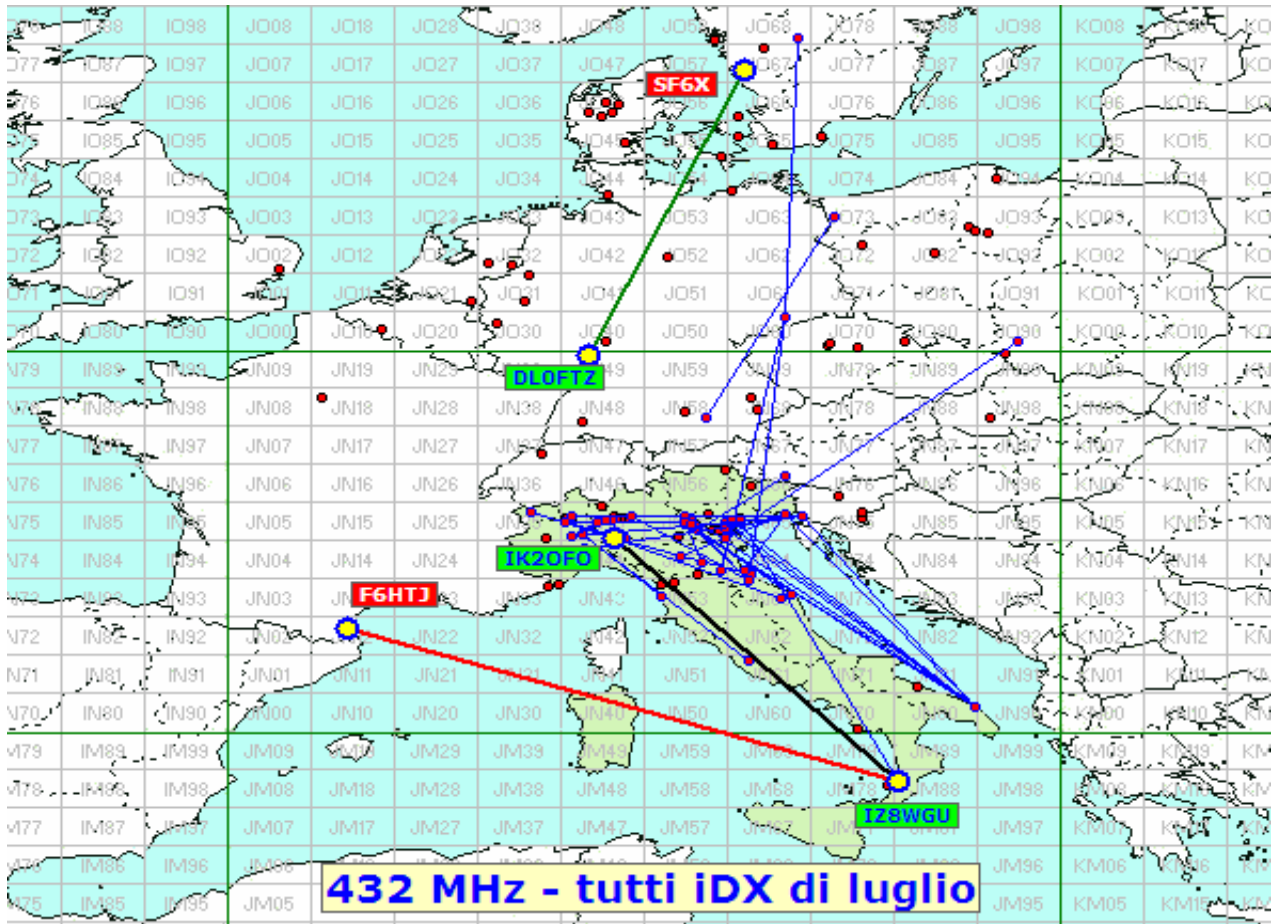


Ranking of the best media for QSO



Media QSO of top ten (in red QSOs made)

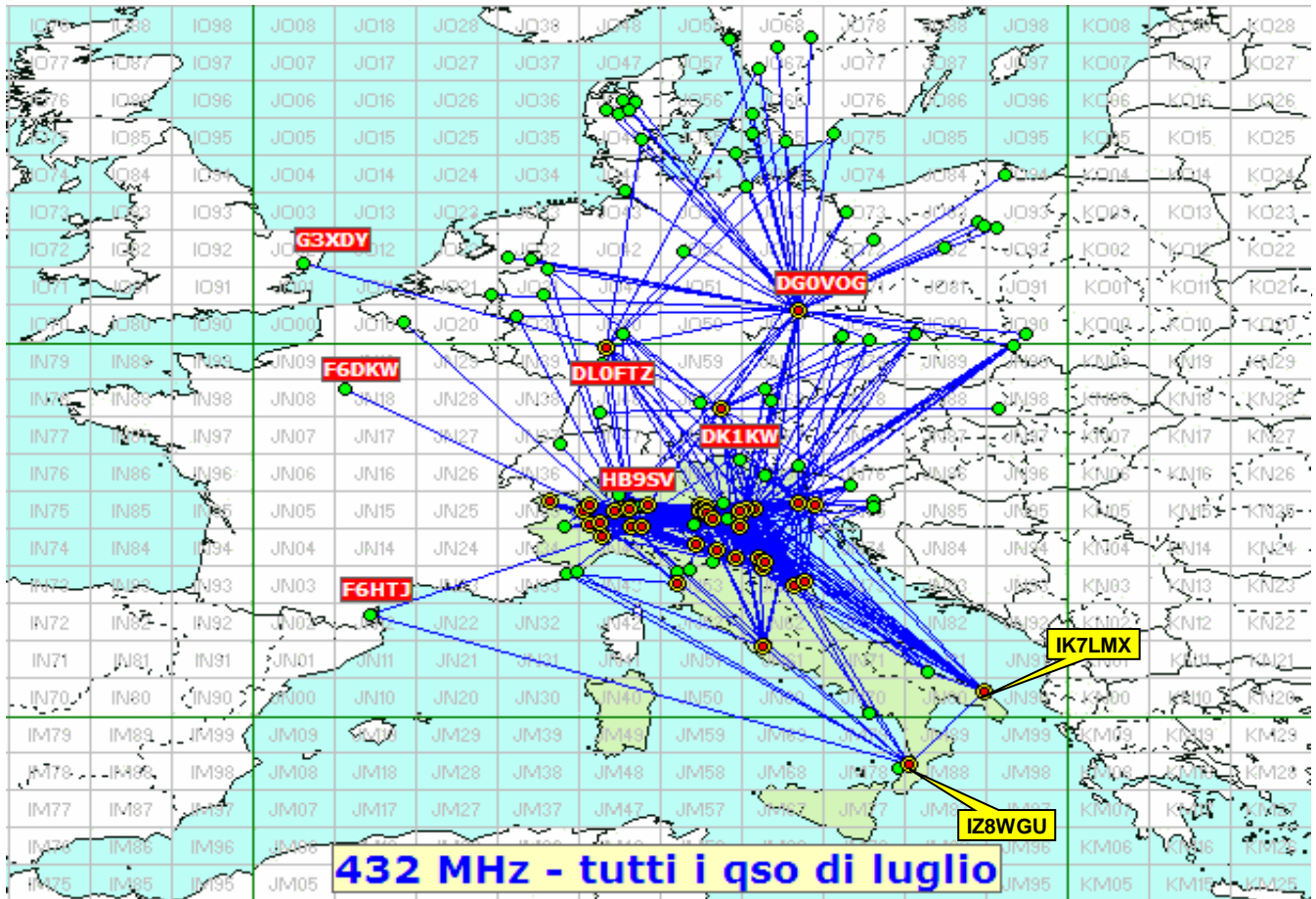
Media qso top ten



432 MHz - tutti iDX di luglio

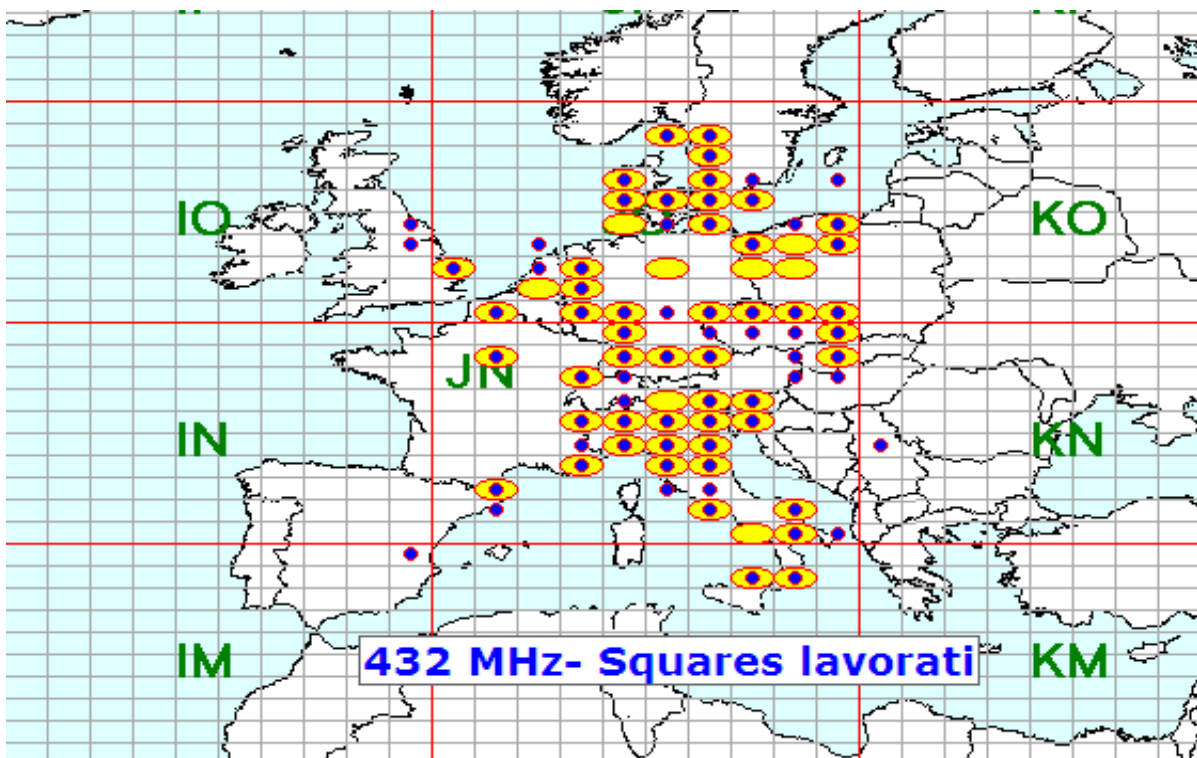
List DX					
Call	Locator	Locator DX	Call DX	QRB	
1	IZ8WGU	JM88AQ	- JN12KQ	F6HTJ	1195
2	IK2OFO	JN45PB	- JM88AQ	IZ8WGU	901
3	DL0FTZ	JN49HU	- JO67EH	SF6X	866
4	IU3CQP	JN65DM	- JM88AQ	IZ8WGU	821
5	DG0VOG	JO60QU	- JO68UD	SA6AIN	812
6	IK7LMX	JN80XP	- JN55LL	IQ3VO	783
7	IK3VZO	JN55XA	- JO90LF	SP9MM	782
8	IQ3VO	JN55LL	- JN80XP	IK7LMX	782
9	IK3XTT	JN55LK	- JN80XP	IK7LMX	780
10	IZ3PZI	JN55NN	- JN80XP	IK7LMX	779
11	I4CIV	JN63FX	- JO60QU	DG0VOG	768
12	IZ4JMU	JN54WE	- JO60QU	DG0VOG	751
13	IZ3XNJ	JN55XL	- JN80XP	IK7LMX	726
14	IW3FVZ	JN65AM	- JN80XP	IK7LMX	725
15	IK3SSG	JN55XH	- JN80XP	IK7LMX	713
16	IV3DXW	JN65QQ	- JN80XP	IK7LMX	673
17	IV3LNQ	JN65VP	- JN80XP	IK7LMX	651
18	DK1KW	JN58RE	- JO73GL	SP1JNY	627
19	IW1CKM	JN45FD	- JN61FU	IZ0MJE	488
20	IZ0MJE	JN61FU	- JN45FD	IW1CKM	488
52	IK2YSJ	JN45MM	- JN45CC	IQ1AO	80
53	IZ3WUX	JN55NK	- JN55XA	IK3VZO	80
54	IZ2FMF	JN45KL	- JN45CC	IQ1AO	67

A lato la tabella dei migliori 20 DX
e in fondo i 3 dx più "corti"



I punti rossi sono i partecipanti allo IAC di Luglio.

Squares TOTALI = 82



● connected this month and previous months
 ● Squares NEW ONE
 ● squares old

Trophy DL 432 MHz

Classifica Italy

n°	Call	totale mese		N°	Punti	Dettagli punti					
1	IK2OFO	19	Qso da 3 p.	1	3	JN58(dk1kw)					
			Qso da 2 p.	6	12	DK9TF(jo31nf)	DL0EE(jn49gk)	DL1KFS(jo30fq)	DL6YBF(jo31ox)	DL8DAU(jo40me)	DL0FTZ(jn49hu)
			Qso da 1 p.	4	4	JN18(f6dkw)	JO80(ok1fpr)	JN37(hb9mfm)	JO10(on4ldp)		
2	IZ4JMU	15	Qso da 3 p.	2	6	JN58(dk1kw)	JN58(dg5dj)				
			Qso da 2 p.	4	8	DF9RJ(jn68gs)	DL3RBH(jn68ik)	DG0VOG(jo60qu)	DL0FTZ(jn49hu)		
			Qso da 1 p.	1	1	JO80(ok1fpr)					
3	IU3CQP	14	Qso da 3 p.	2	6	JN58(dk1kw)	JN58(dg5dj)				
			Qso da 2 p.	2	4	DG0VOG(jo60qu)	DL0FTZ(jn49hu)				
			Qso da 1 p.	4	4	JO80(ok1fpr)	JO90(sp9mm)	JN99(so9a)	JO70(ok1teh)		
4	IV3DXW	13	Qso da 3 p.	1	3	JN58(dk1kw)					
			Qso da 2 p.	3	6	DG0VOG(jo60qu)	DL0FTZ(jn49hu)	DL8DAU(jo40me)			
			Qso da 1 p.	4	4	JO80(ok1fpr)	JN99(so9a)	JO90(sp9mm)	JO70(ok1fen/p)		
4	IK3VZO	13	Qso da 3 p.	1	3	JN58(dk1kw)					
			Qso da 2 p.	3	6	DG0VOG(jo60qu)	DF9RJ(jn68gs)	DL0FTZ(jn49hu)			
			Qso da 1 p.	4	4	JO80(ok1fpr)	JO90(sp9mm)	JN99(so9a)	JO70(ok1fen/p)		
4	I4CIV	10	Qso da 3 p.	1	3	JN58(dk1kw)					
			Qso da 2 p.	3	6	DG0VOG(jo60qu)	DL0FTZ(jn49hu)	DL8DAU(jo40me)			
			Qso da 1 p.	1	1	JO70(ok1fen/p)					
7	IW1CKM	3	Qso da 3 p.	1	3	JN58(dk1kw)					
			Qso da 2 p.	0	0						
			Qso da 1 p.	0	0						
8	IK3SSG	3	Qso da 3 p.	1	3	JN58(dk1kw)					
			Qso da 2 p.	0	0						
			Qso da 1 p.	0	0						

Classifica Inside / Over JNx7

n°	Call	Punti	Locatore
1	DL0FTZ	6	JN49HU
2	OK1FPR	5	JO80CE
3	DG0VOG	5	JO60QU
4	SP9MM	3	JO90LF
5	SO9A	3	JN99HW
6	OK1FEN/P	3	JO70NA
7	DL8DAU	3	JO40ME
8	OK1TEH	2	JO70FD
9	DG5DJ	2	JN58LI
10	DF9RJ	2	JN68GS
11	ON4LDP	1	JO10UN
12	HB9MFM	1	JN37SG
13	F6DKW	1	JN18CS
14	DL6YBF	1	JO31OX
15	DL3RBH	1	JN68IK
16	DL1KFS	1	JO30FQ
17	DL0EE	1	JN49GK
18	DK9TF	1	JO31NF

